

5G PARADIGM SHIFT - LIFI TECHNOLOGY

Zero.1 Marc Fleschen CEO/Founder

PRESENTATION FLOW

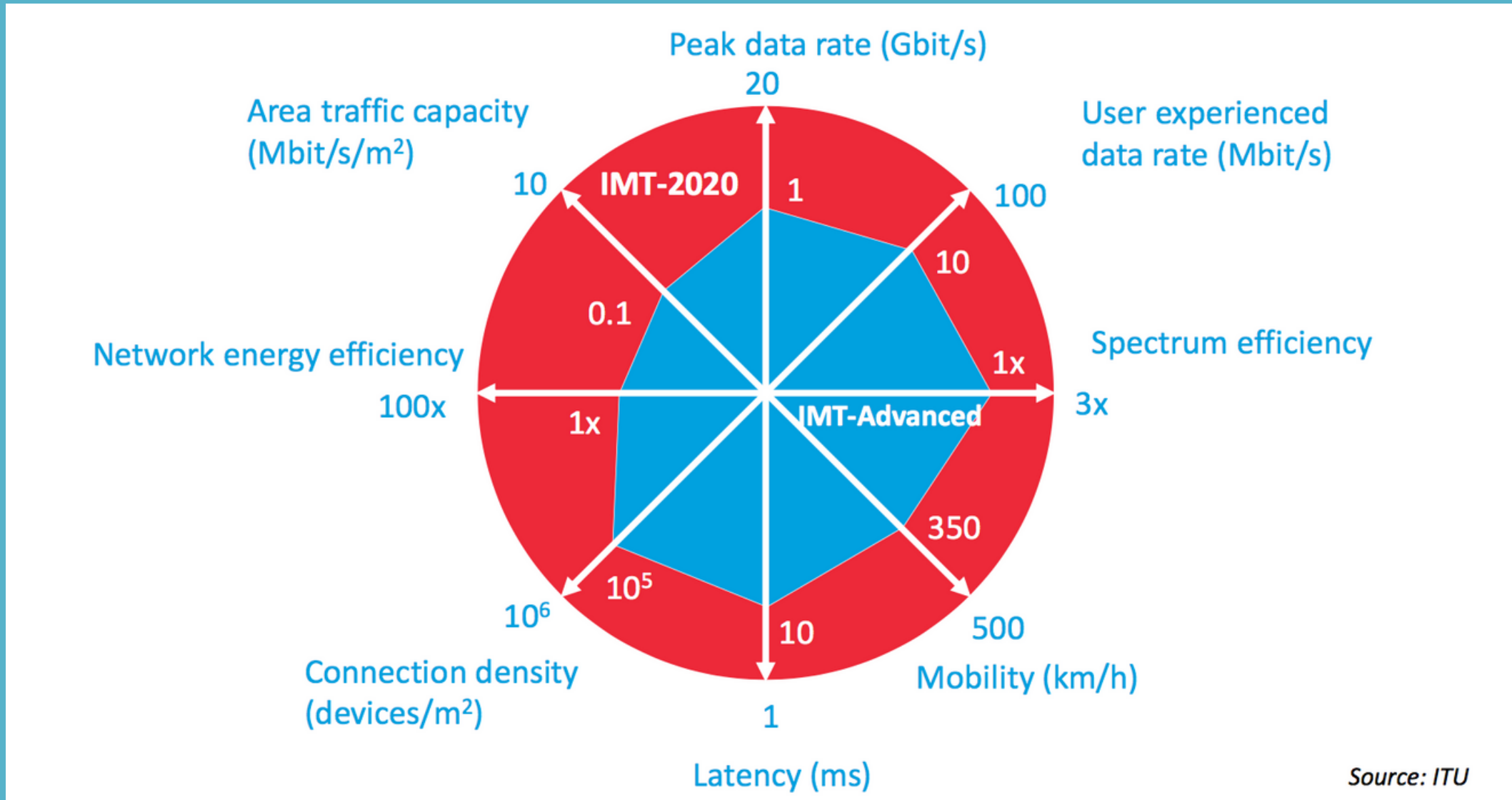
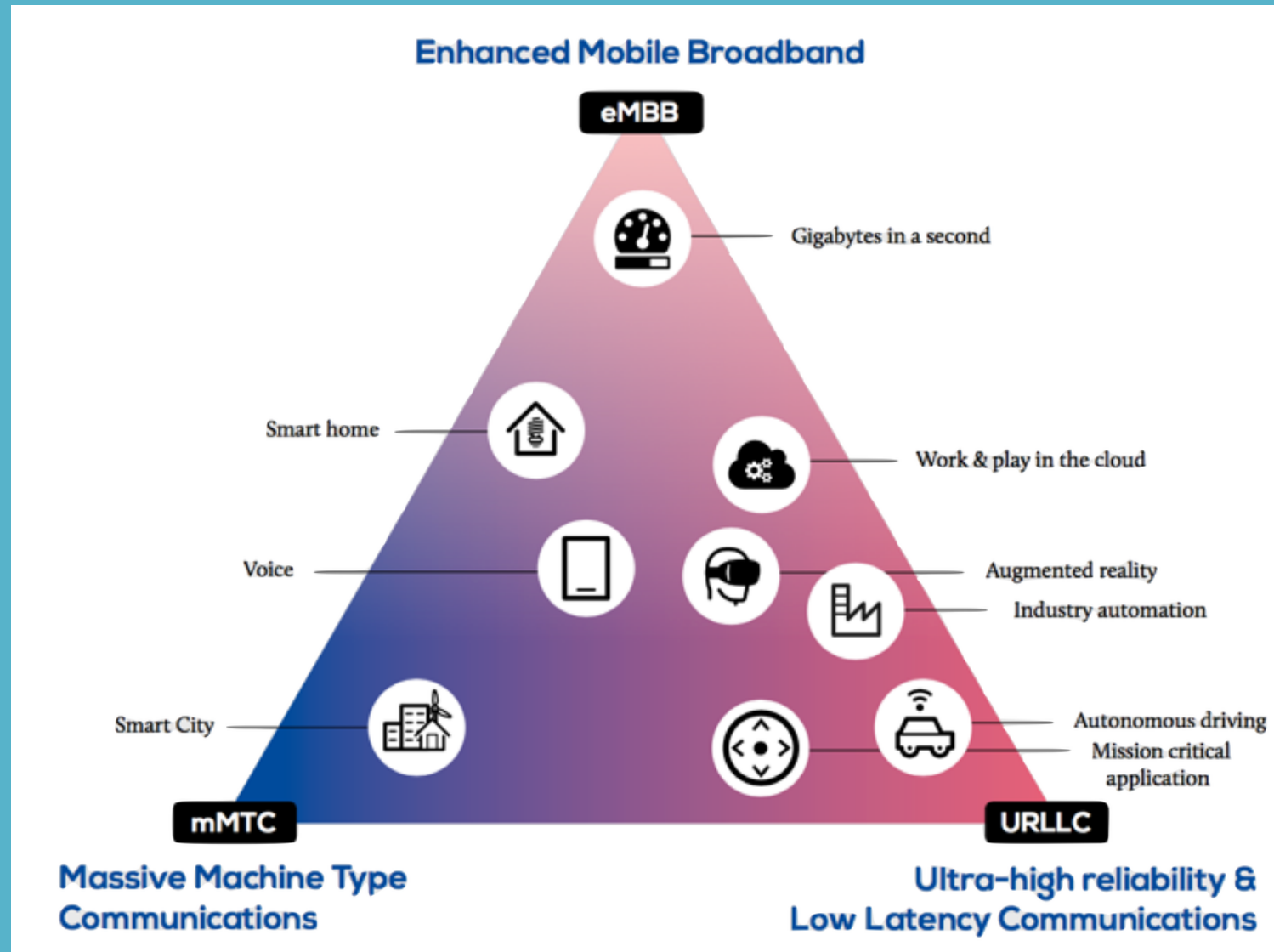
- 5G Specs
- 5G use case families
- 5G challenges (spectrum)(satellite)
- LIFI to support 5G
- 5G new business model (opex not capex)
- Conclusion

Points of Discussion

Cellular Generation	Paradigm shifts	Service Pull	Impact
1G - 2G	Analog to Digital	Mobile Telephony	Revolution
2G - 3G	Small cell concept	Mobile Internet	Evolution
3G - 4G	Small cell concept	Mobile Internet	Evolution
4G - 5G	RF to Light	IOT-AR-VR-M2M- V2V etc..	Revolution

5G SPECS

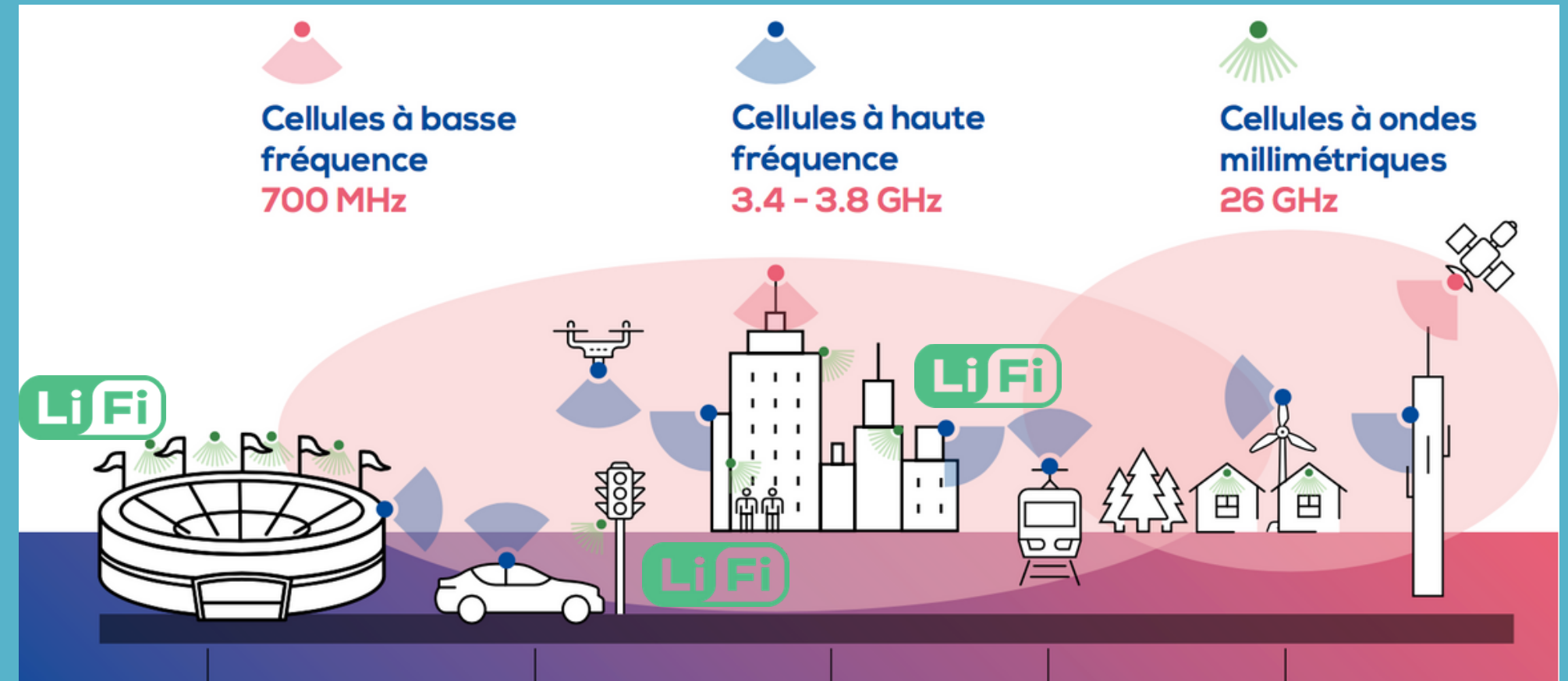
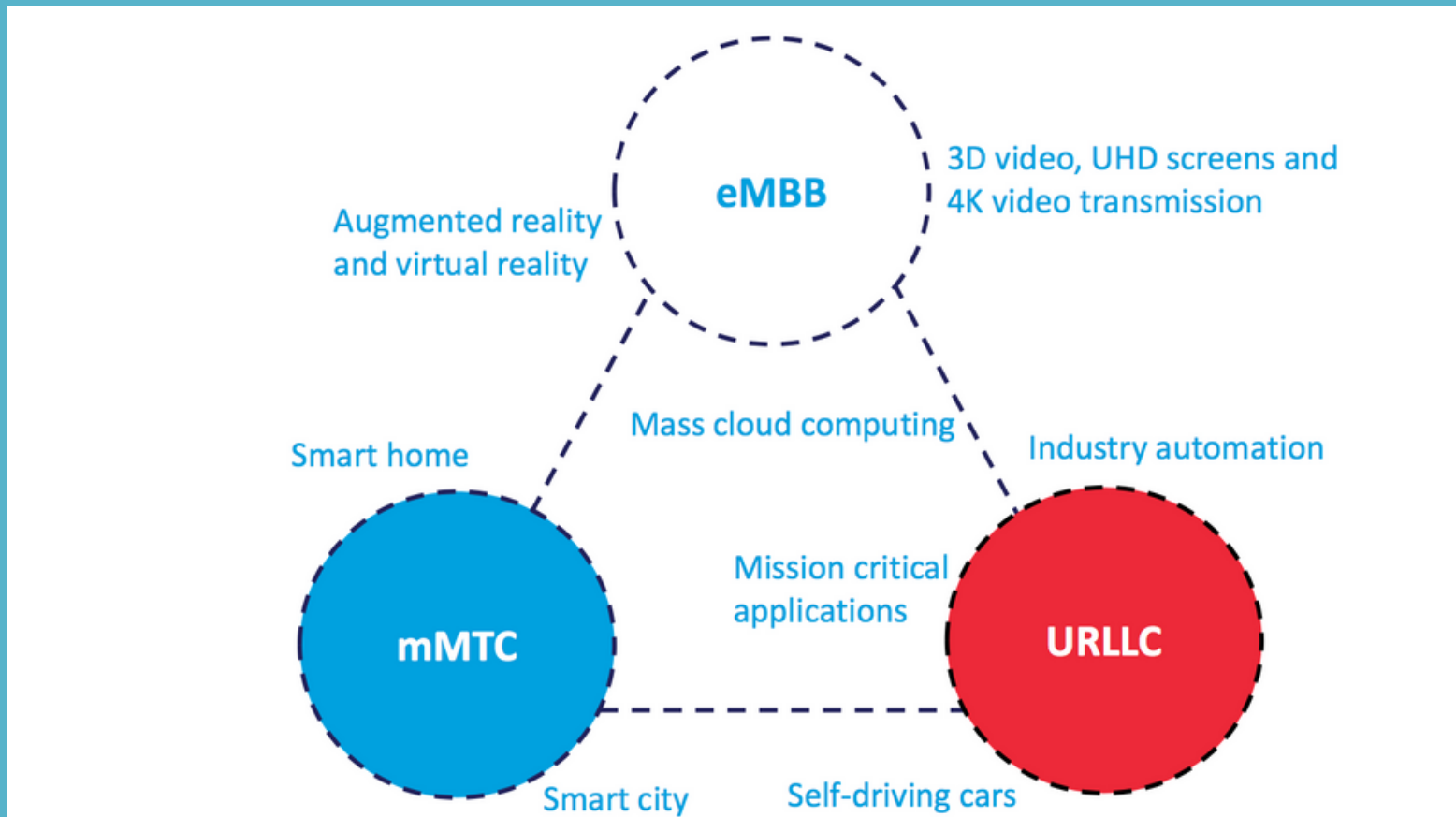
Network Slicing



50 Billion IOT connected devices by 2020

5G USE CASE FAMILIES

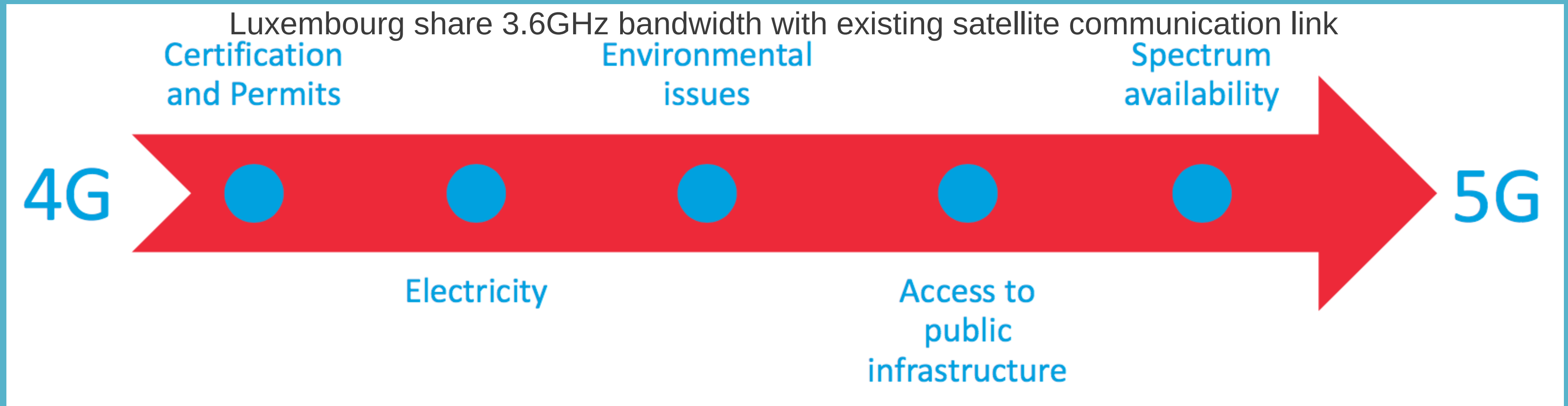
Single unified physical network - faster but more agile



5G will have to be easier to manage and more agile catering for a range of use case and requirements

5G CHALLENGES

Spectrum - Environmental impact - Face long term challenges

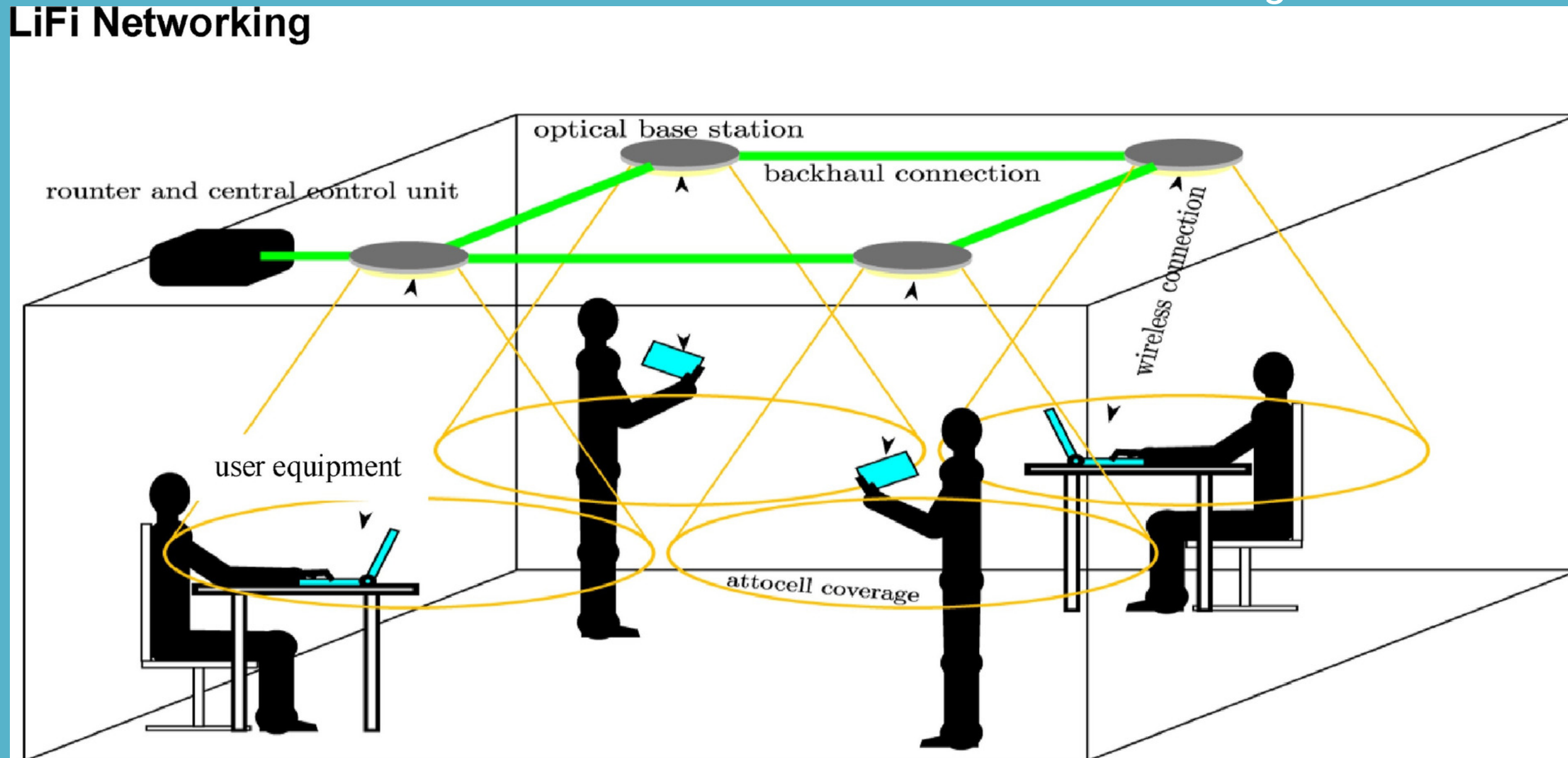


5G will need to answer new global problems such as energy, EMF, Health, interference

LIFI TO SUPPORT 5G

Shift RF to Light

LiFi Networking

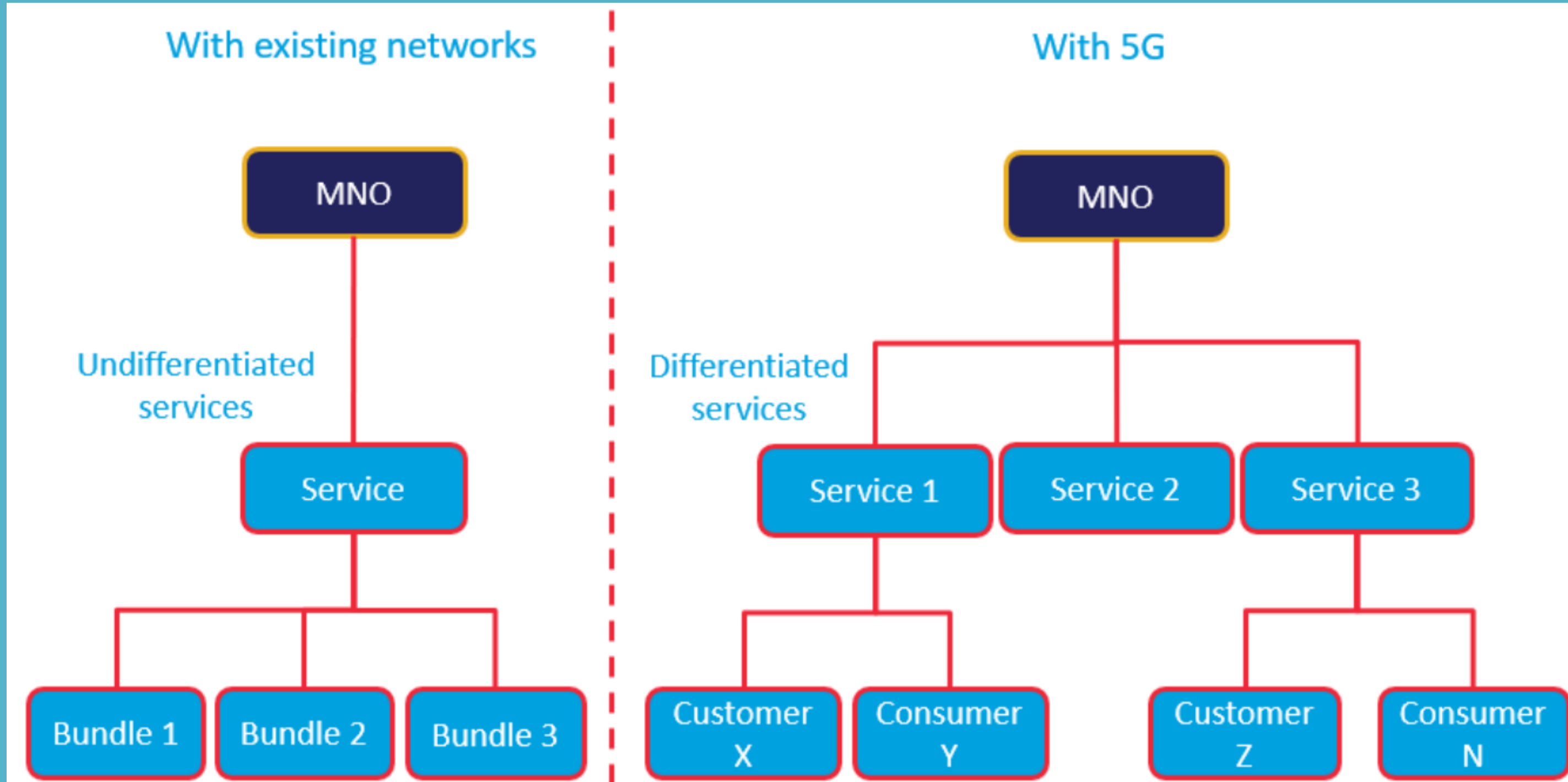


- Low latency
- High speed data transmission
- RF free - no interference
- Light+Data in a single point
- Energy saving
- Optical attocell
- Any existing LED
- Extra wireless capacity
- Bandwidth Off loading
- Cost effective
- IEEE standard 802.15.7 / 802.11bb

Market disruption potential LIFI can unlock industry 4.0 - IOT - Light as a Service

5G NEW BUSINESS MODEL

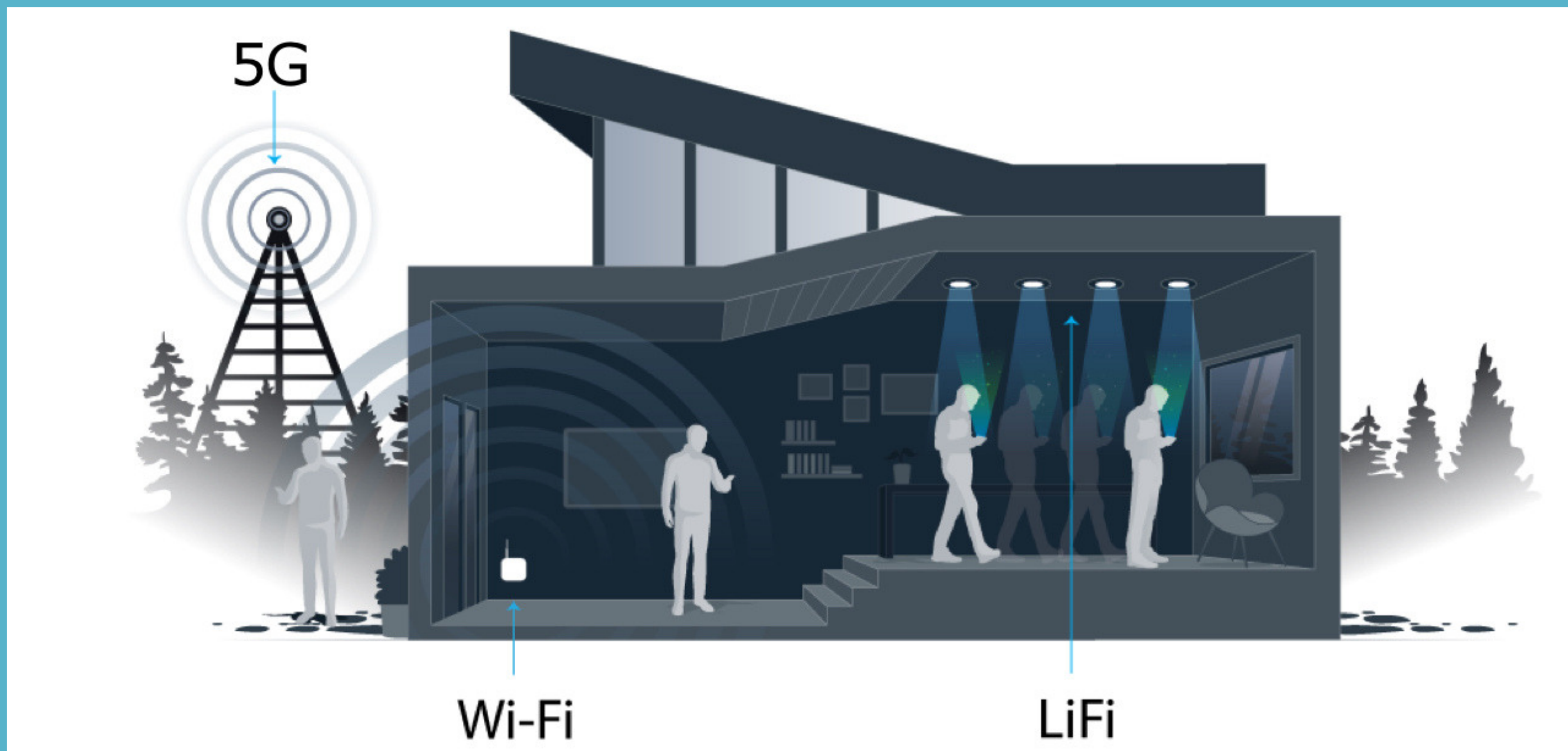
Service differentiation shift



The changes of service provisioning models will influence the charging models and support OPEX over CAPEX

CONCLUSION

Multi layer - Multi services



A single layer can not answer all the new challenges LIFI can support 5G by solving some of the issues

“

THANK YOU



THE ADVANCE OF
TECHNOLOGY IS BASED ON
MAKING IT FIT IN SO THAT
YOU DON'T REALLY EVEN
NOTICE IT, SO IT'S PART OF
EVERYDAY LIFE.

Bill Gates